

Osaka University Global Village Tsukumodai

Opening in October 2020!



大阪大学
OSAKA UNIVERSITY

Dormitory

<https://globalvillage.icho.osaka-u.ac.jp/tsukumodai>



Bird's-eye view



Global court



Open lounge

New housing facilities with a convivial international living environment to open.

Outline of Global Village Tsukumodai

- Number of rooms: 300 rooms in the student dormitory, 400 rooms in the university staff dormitory
- Common-use facilities
Global court, open lounge, Japanese-style rooms, community space, laundry, etc.
A convenience store and other commercial facilities are located adjacent to Global Village Tsukumodai.

Outline of the student dormitory

- The dormitory is a 10-story building with separate male and female living areas.
- The residential units are shared by Japanese and international students. (5-, 7- and 9-person units are available.)
- Living rooms, kitchens and toilets are shared-use.
- Shared bathrooms, delivery lockers and mail boxes are located on the first floor.
- Private rooms and public areas are fully furnished. (See the reverse side.)

Security measures

- Dormitory keepers are in service around the clock.
- Each residential unit is securely accessible only by card reader.
- The student dormitory's entrance has an automatic lock system and security camera.

Events

- Various events are held to form friendships among residents of the village, such as a village festival and welcome party.

Educational programs

- Educational programs, such as a cross-cultural understanding program, are provided in the dormitory. (Participation is optional.)

Access

- Three minutes on foot from Yamada Station on Hankyu Railway Senri Line and Osaka Monorail
- Convenient access to and from the Suita, Toyonaka and new Minoh campuses of Osaka University

Monthly residential fees [incl. tax]

Residential unit		Rent	Mandatory rental fee (*1)	Common area charge (*2)	One-time fee on moving in
5-person unit	5-person unit x 7	40,500 yen	8,910 yen	9,000 yen	9,900 yen
7-person unit	7-person unit x 7	39,000 yen	8,910 yen	9,000 yen	9,900 yen
9-person unit	9-person unit x 24	37,400 yen	8,910 yen	9,000 yen	9,900 yen

*1: The fee covers: an air conditioner, desk, bed and bookshelf in a private room; and a refrigerator, washing machine, TV set and other furniture in the common area of the residential unit. *2: The common area charge includes utilities (electricity, gas and water) for each private room and the common area. *3: In addition, there is an Internet fee of 1,320 yen (incl. tax) (mandatory), and bicycle parking and rental locker fees (optional).

Number of students to be accepted

Approx. 300 students, namely 225 international students, 10 Japanese students who wish to study abroad, and 65 Japanese students, are accepted for accommodation in the dormitory. Japanese students will be allocated among different residential units. The exact number of students to be accepted, along with the breakdown of male and female students, will be announced on the website in January 2020.

Period of residence

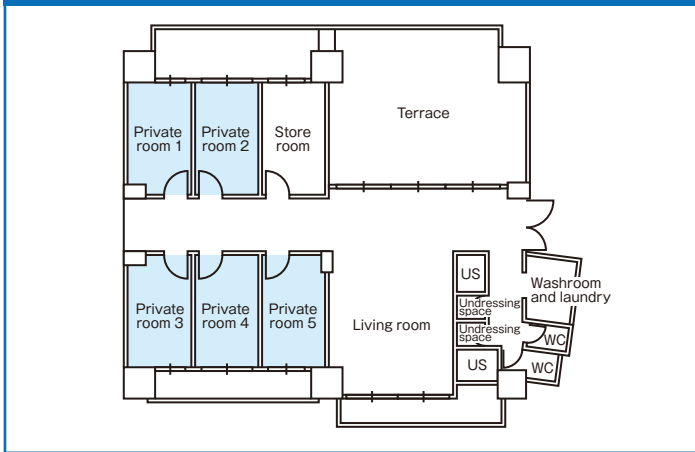
International students: One year
Japanese students: The minimum years of study required to complete the program in which the student is enrolled

Inquiries: Housing Division of Osaka University housing-kanri@office.osaka-u.ac.jp

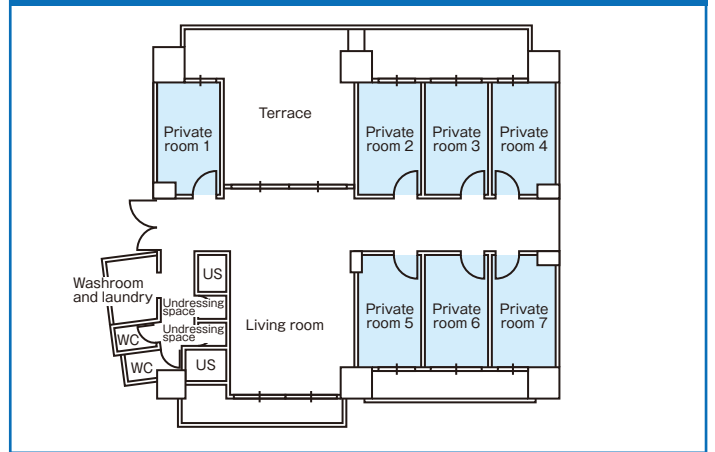
Outline of shared residential units

- The locations of shower, toilet and other facilities differ slightly from floor to floor.
- Three rooms have a barrier-free design.

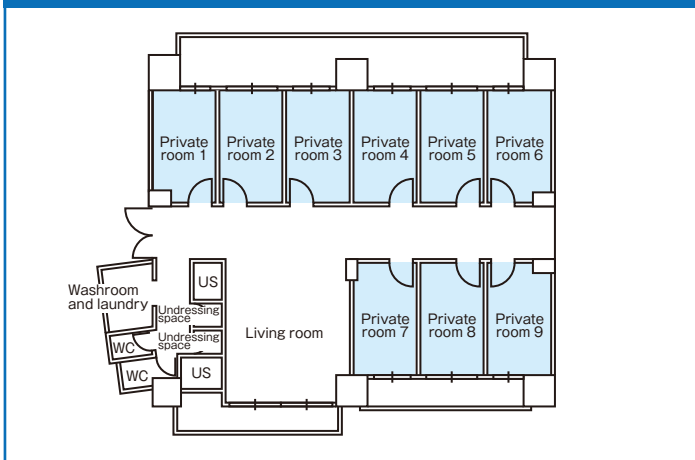
5-person unit (35 rooms in 7 units)



7-person unit (49 rooms in 7 units)



9-person unit (216 rooms in 24 units)



Common area equipment



Air conditioner Refrigerator IH cooker TV set Dining table and chairs



Washing machine and dryer Microwave oven Cupboard

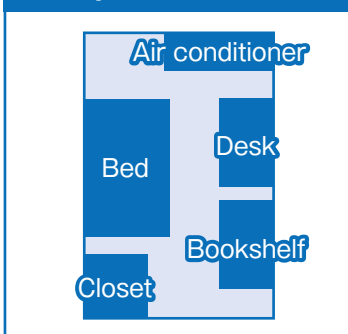


Iron Vacuum cleaner Wi-Fi



Outline of private room

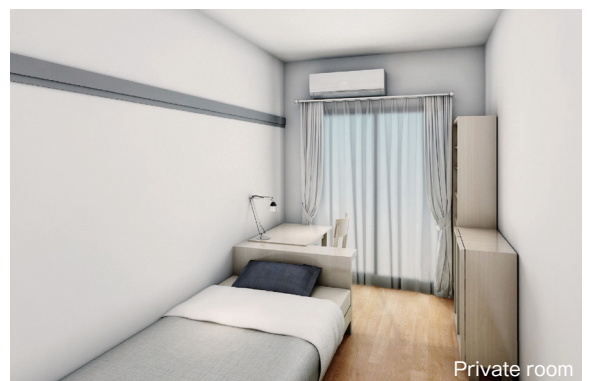
Floor plan



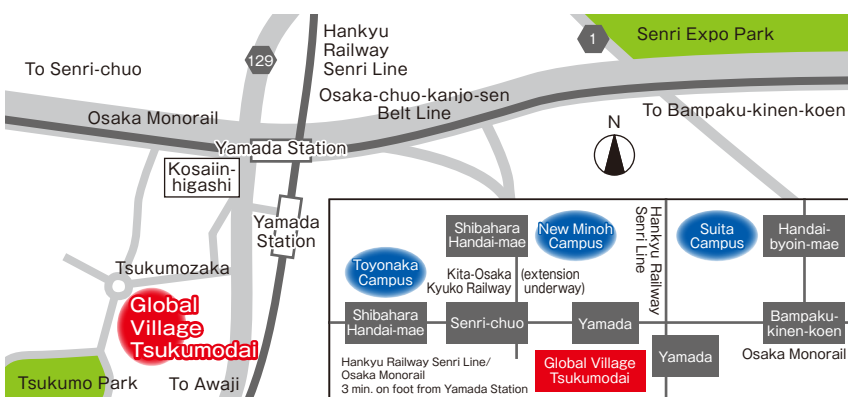
Private room equipment

Air conditioner, desk, chair, bookshelf, bed, bedlinen, curtains, desk lamp, clothes drying stand, Wi-Fi
Additional furniture and home electrical appliances are available for rent.

Private room area: Approx. 9m²



Access



How to apply

Details about application and screening procedures will be posted on the following website around January 2020:

<https://globalvillage.icho.osaka-u.ac.jp/tsukumodai>

Inquiries:

Housing Division of Osaka University
 housing-kanri@office.osaka-u.ac.jp

*The drawings, floor plans and descriptions are as of the publication date and are subject to change.