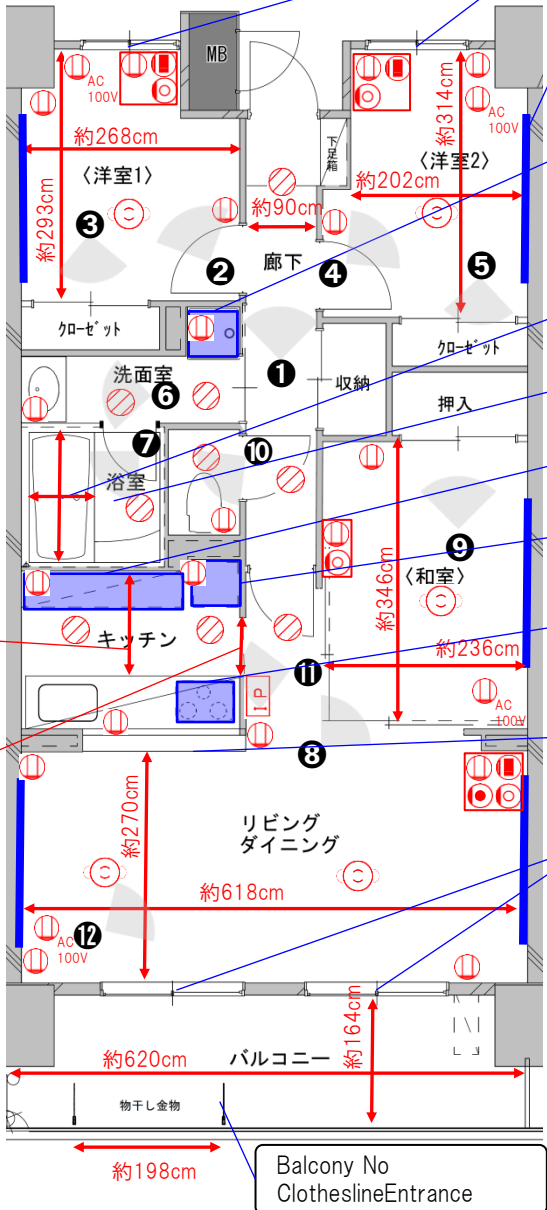


# Inner dimension diagram

## Instructor Housing (for families)

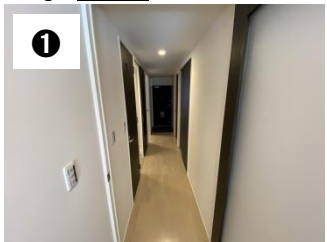
**Attention**

① There is a room that flips left and right. ② The dimensions are for reference only. There may be some errors depending on the room.

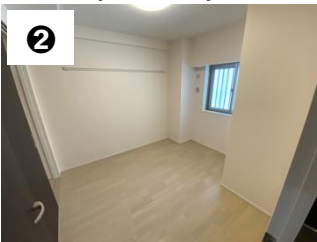


- Entrance door  
W85cm×H187cm
- Sweep Window(rail)  
W120cm×H101cm
- Hanger rail  
W200cm(H176cm)
- Laundry  
pan W58cm×D58cm  
(Inside dimension)
- Bathtub(No Bathtub cover)  
W150cm×D74cm  
(External dimensions)
- Bathroom ventilation fan  
W30cm×D30cm
- Cupboard space  
W194cm×D30cm
- Refrigerator space  
W74cm×D68cm
- Built-in IH stove(rental)  
three burners,  
grill room
- Kitchen counter  
(Space under the counter)  
W141cm×D17cm×H102cm
- Sweep Window(rail)  
W202cm×H190cm

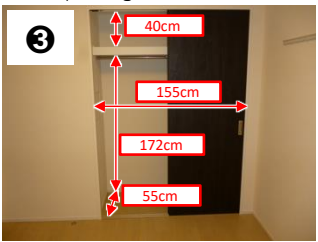
- ### Usage Guide
- Ⓜ : Outlet × 2
  - Ⓜ<sub>AC</sub> : Outlet(For air conditioner)
  - I.P. : Intercom(Master unit)
  - Ⓜ : LAN terminal
  - Ⓜ : TV terminal
  - Ⓜ : Telephone terminal
  - Ⓜ : Ceiling light
  - Ⓜ : Downlight



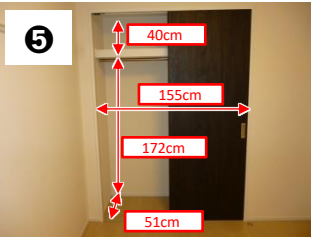
① Ceiling height: About 220cm



② Ceiling height: About 240cm



④ Ceiling height: About 240cm



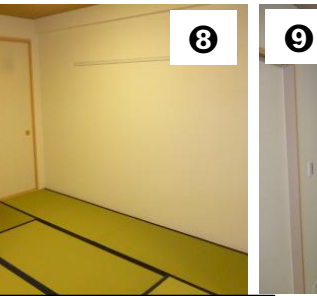
⑤ Ceiling height: About 240cm



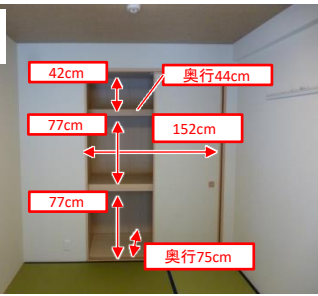
⑥ Ceiling height: About 215cm



⑦ Ceiling height: About 200cm



⑧ Ceiling height: About 240cm



⑨ Ceiling height: About 240cm



⑩ Ceiling height: About 215cm



⑪ Ceiling height: About 220cm



⑫ Ceiling height: About 240cm

※Internet environment is maintained in the school dormitory.(All residents need a contract)  
 ※The provider will be "My Agent". Please refer to HP for details.([https://cs-contact.jp/myagent\\_ne.jp](https://cs-contact.jp/myagent_ne.jp))  
 ※If you are currently contracted with another provider and want to continue using the same email address after moving, Check with your current provider to see if you can continue to use your email address. (Some providers cannot continue to use it, so be sure to check in advance.)