

Osaka University Global Village Tsukumodai

Staff dormitory



大阪大学
OSAKA UNIVERSITY



<https://globalvillage.icho.osaka-u.ac.jp/tsukumodai>



Global court



Bird's-eye view



Open lounge

New housing facilities with a convivial international living environment opened.

Outline of Global Village Tsukumodai

- Number of rooms: 396 rooms in the student dormitory, 304 rooms in the university staff dormitory
- Common-use facilities
Global court, open lounge, Japanese-style rooms, community space, laundry, etc.
A convenience store and other commercial facilities are located adjacent to Global Village Tsukumodai.

Outline of the staff dormitory

- 10-story building
- 24 single-occupancy rooms for unmarried staff, 200 single-occupancy rooms for unmarried University Hospital staff (applications to be invited separately)
- 40 single-occupancy rooms for married staff, 40 family rooms
- Mail boxes and delivery lockers
- Parking lots for cars, bicycles, motorcycles and mopeds

Security measures

- Dormitory keepers are in service around the clock.
- The staff dormitory's entrance has an automatic lock system.
- Security cameras are installed.

Events

- Various events such as a village festival and a welcome party are held to form friendships among residents of the village.

Access

- Three minutes on foot from Yamada Station on Hankyu Railway Senri Line and Osaka Monorail
- Convenient access to and from the Suita, Toyonaka and new Minoh campuses of Osaka University

Monthly residential fees [incl. tax]

Residential unit	Number of rooms	Rent	Mandatory rental fee (*1)	Common area charge	One-time fee on moving in	
Single-occupancy room for unmarried staff	1K	24	56,000 yen	4,950 yen	1,600 yen	14,300 yen
Single-occupancy room for married staff	1LDK	40	67,000 yen	1,320 yen	1,900 yen	23,100 yen
Family room	3LDK	40	110,000 yen	1,980 yen	2,800 yen	46,200 yen

*1: The fee covers furniture and equipment (mandatory). *2: In addition, there is an Internet fee (mandatory).

Monthly parking fee [incl. tax]

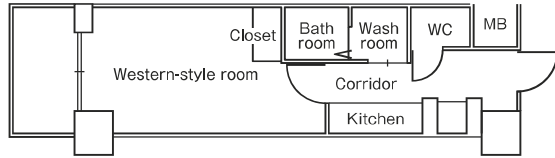
Car: 8,000 yen, Bicycle: 500 yen, Moped: 1,000 yen, Motorcycle: 1,500 yen

Period of residence

Up to 10 years but not exceeding the years of service under the employment contract with Osaka University

Room types (floor plan and room equipment)

Single-occupancy room for unmarried staff (24 rooms)



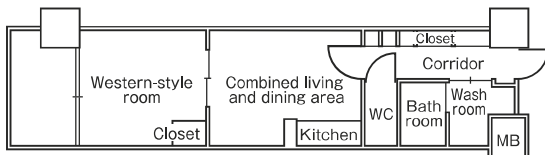
* The floor plan is drawn to a larger scale than the other room types.

Room outline

One room: Approx. 25m²
Kitchen, toilet, bathroom, air conditioner, curtains, bedframe, IH cooker



Single-occupancy room for married staff (40 rooms)

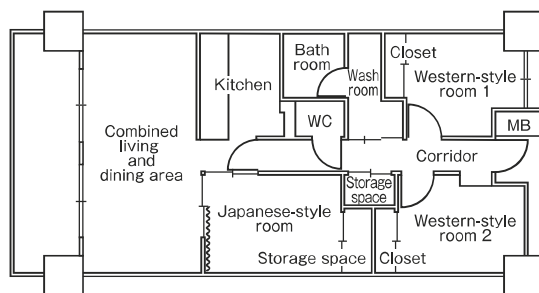


Room outline

One room: Approx. 37m²
Combined living and dining area, kitchen, toilet, bathroom, IH cooker



Family room (40 rooms)

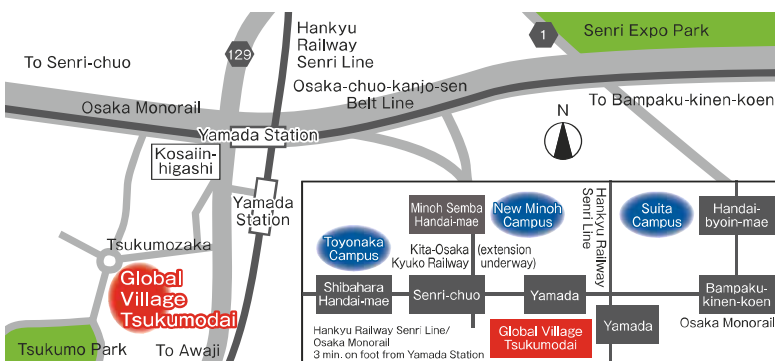


Room outline

Three rooms: Approx. 72m²
Combined living and dining area, kitchen, toilet, bathroom, IH cooker



Access



How to apply

For details about application and screening procedures, please see the following website.

<https://globalvillage.icho.osaka-u.ac.jp/tsukumodai>

*The drawings, floor plans and descriptions are subject to change.