

Osaka University Global Village Tsukumodai

Staff dormitory



大阪大学
OSAKA UNIVERSITY



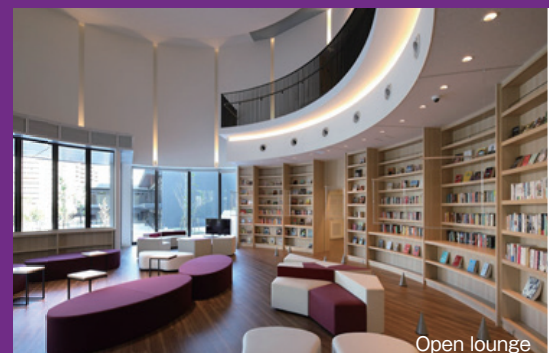
<https://globalvillage.icho.osaka-u.ac.jp/tsukumodai>



Global court



Bird's-eye view



Open lounge

New housing facilities with a convivial international living environment opened.

Outline of Global Village Tsukumodai

- Number of rooms: 396 rooms in the student dormitory, 304 rooms in the university staff dormitory
- Common-use facilities
Global court, open lounge, Japanese-style rooms, community space, laundry, etc.
A convenience store and other commercial facilities are located adjacent to Global Village Tsukumodai.

Outline of the staff dormitory

- 10-story building
- 24 single-occupancy rooms for unmarried staff, 200 single-occupancy rooms for unmarried University Hospital staff (applications to be invited separately)
- 40 single-occupancy rooms for married staff, 40 family rooms
- Mail boxes and delivery lockers
- Parking lots for cars, bicycles, motorcycles and mopeds

Security measures

- Dormitory keepers are in service around the clock.
- The staff dormitory's entrance has an automatic lock system.
- Security cameras are installed.

Events

- Various events such as a village festival and a welcome party are held to form friendships among residents of the village.

Access

- Three minutes on foot from Yamada Station on Hankyu Railway Senri Line and Osaka Monorail
- Convenient access to and from the Suita, Toyonaka and new Minoh campuses of Osaka University

Monthly residential fees [incl. tax]

Residential unit		Number of rooms	Rent	Mandatory rental fee (*1)	Common area charge	One-time fee on moving in
Single-occupancy room for unmarried staff	1K	24	56,000 yen	4,950 yen	3,500 yen	14,300 yen
Single-occupancy room for married staff	1LDK	40	67,000 yen	1,320 yen	4,200 yen	23,100 yen
Family room	3LDK	40	110,000 yen	1,980 yen	6,300 yen	46,200 yen

*1: The fee covers furniture and equipment (mandatory). *2: In addition, there is an Internet fee (mandatory).

Monthly parking fee [incl. tax]

Car: 8,000 yen, Bicycle: 500 yen, Moped: 1,000 yen, Motorcycle: 1,500 yen

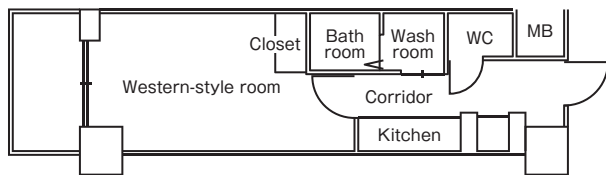
Period of residence

Up to 10 years but not exceeding the years of service under the employment contract with Osaka University

Inquiries: Osaka University Housing Division housing-kanri@office.osaka-u.ac.jp

Room types (floor plan and room equipment)

Single-occupancy room for unmarried staff (24 rooms)



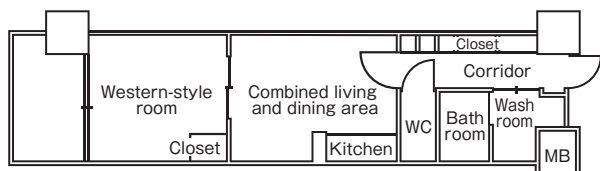
* The floor plan is drawn to a larger scale than the other room types.

Room outline

One room: Approx. 25m²
Kitchen, toilet, bathroom, air conditioner, curtains, bedframe, IH cooker



Single-occupancy room for married staff (40 rooms)

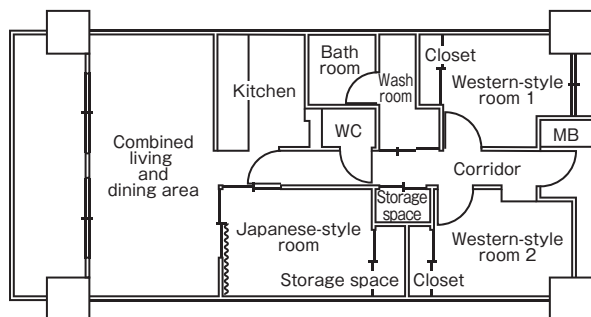


Room outline

One room: Approx. 37m²
Combined living and dining area, kitchen, toilet, bathroom, IH cooker



Family room (40 rooms)

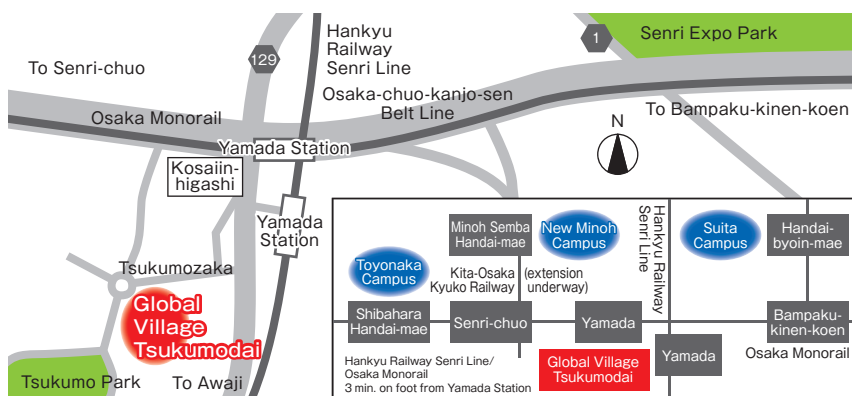


Room outline

Three rooms: Approx. 72m²
Combined living and dining area, kitchen, toilet, bathroom, IH cooker



Access



How to apply

For details about application and screening procedures, please see the following website.

<https://globalvillage.icho.osaka-u.ac.jp/tsukumodai>

Inquiries:
Osaka University Housing Division
housing-kanri@office.osaka-u.ac.jp

*The drawings, floor plans and descriptions are subject to change.