

Osaka University Global Village Minoh Semba



Opening in April 2021!

<https://globalvillage.icho.osaka-u.ac.jp/minoh>



Appearance



Study room



Open lounge

A new student dormitory to open on the new Minoh campus that connects citizens to the world

Outline of Global Village Minoh Semba

- Number of rooms: 320 rooms (The dormitory accommodates both Japanese and international students in single-room residential units.)
- The dormitory is a 12-story building with commercial and other facilities located on the 1st and 2nd floors.
- Private rooms are fully furnished. (See the reverse side.)
- Common-use facilities:
Open lounge, small open space
Study room
Commercial facilities on the 1st floor
- Mail boxes and delivery lockers are available.
- Bicycles can be parked in the municipal bicycle parking lot adjacent to the dormitory. (for a fee)

Security measures

- Dormitory keepers are in service from 8:00 to 20:00 except on Sundays, national holidays, and New Year holidays.
- Telephone service in Japanese and English is available 24/7.
- The student dormitory's entrance has an automatic lock system.
- A security camera is provided.
- Female only floors are available.

Access

- Two minutes on foot from Minoh Semba Handai-mae Station (to be opened in 2023) of Kita-Osaka Kyuko Railway
- Adjacent to the Foreign Studies Research and Lecture Building on the new Minoh campus
- Convenient access to and from the Suita and Toyonaka campuses of Osaka University

Residential fees including tax [All amounts except the one-time fee on moving in are monthly.]

Residential unit	Rent	Mandatory rental fee *1	Mandatory Internet fee	One-time fee on moving in
Single room	40,000 yen	5,390 yen	1,100 yen	13,200 yen

*1 The fee covers an air conditioner, desk, chair, bed, curtains, cooker and bedlinen set in a private room (mandatory).

*2 Utility fees (gas, electricity and water) must be paid individually.

Number of students to be accepted

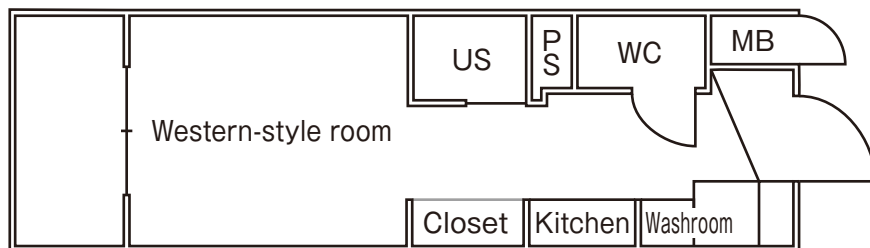
200 international students enrolled in the Center for Japanese Language and Culture, etc.
120 Japanese female students

Period of residence

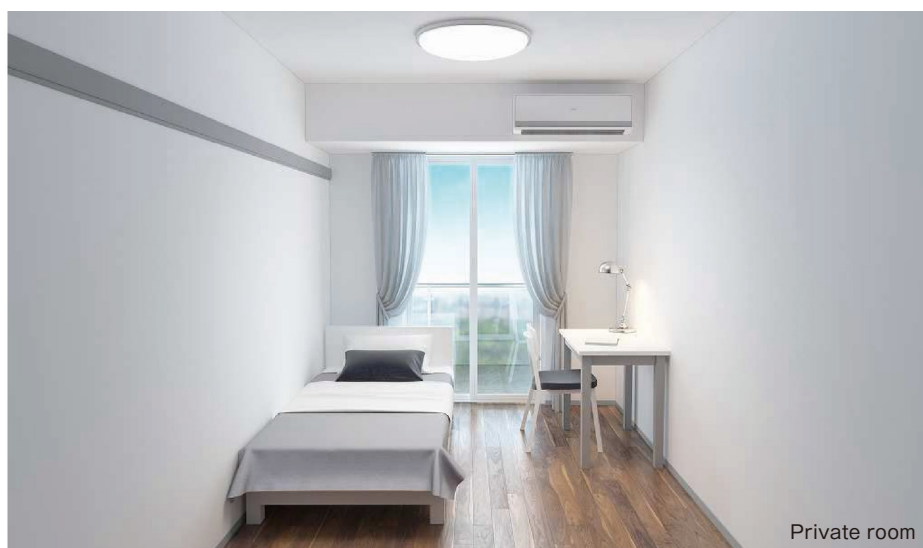
International students : One year
Japanese students : The minimum years of study required to complete the program in which the student is enrolled

Outline of private room

Floor plan



● The layout differs slightly from room to room



Private room

Private room area: Approx.18m²

Equipment



Air conditioner



Desk



Chair



Bed



Curtains



IH Cooker



Bedlinen set

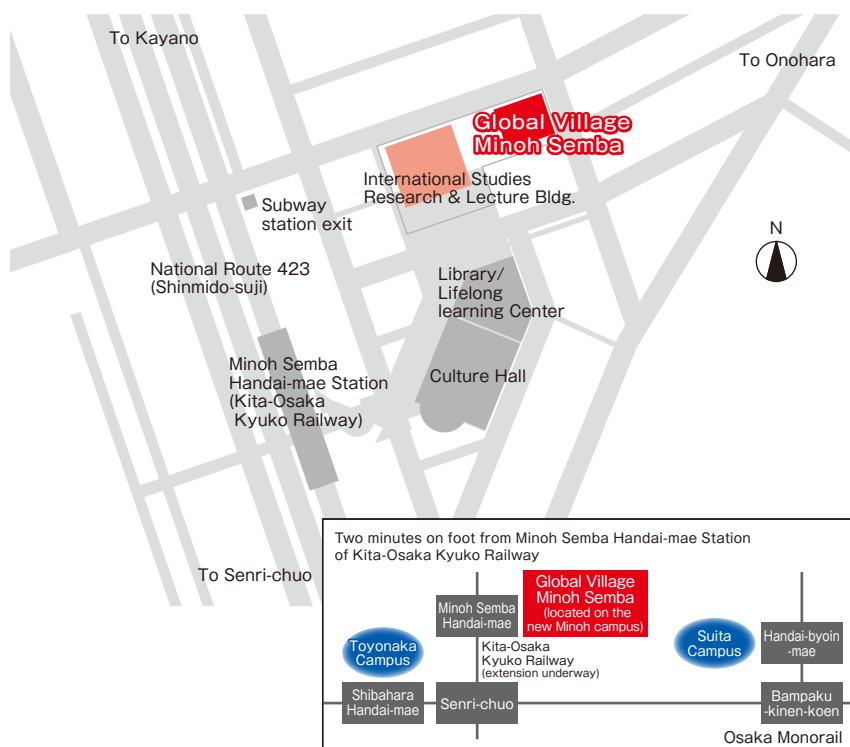


Wi-Fi

* Additional furniture and home electrical appliances such as desk lamp, bookshelf, refrigerator, and washing machine are available for rent.



Access



How to apply

Details about application and screening procedures will be posted on the following website around the summer of 2020:

<https://globalvillage.icho.osaka-u.ac.jp/minoh>

Inquiries:

Osaka University Housing Division
housing-kanri@office.osaka-u.ac.jp



*The drawings, floor plans and descriptions are as of the publication date and are subject to change.